

Registration Form

Understanding Traumatic Brain Injuries: Signs, Symptoms & Resources

August 27, 2024: 9am-12:15pm

Registration deadline: August 23

Call or email Kelsey Snowden by August 23 to confirm registration.

Please Print

\$40 for CEUs \$20 without CEUs

Name _____

Address _____

Phone _____

Email _____

Agency _____

Profession (LSW, LISW, RN, etc.) _____

License No.* _____

Required for Social Workers

Payment **must** accompany your registration.
Make check payable to & mail to:

**Area Agency on Aging, PSA 2
Attn: Fiscal Department/CEU Training
40 W. Second Street, Suite 400
Dayton, OH 45402**

NOTE: \$20 fee for returned checks.



AREA AGENCY
ON AGING

937-223-HELP

www.info4seniors.org

Support is Our Strength.

40 W. 2nd St., Suite 400
Dayton, OH 45402
(937) 341-3000



Ohio Brain Injury

P r o g r a m

Funded, in part, by a Title III grant from the Ohio Department of Aging. The Area Agency on Aging, PSA 2 is non-discriminatory in services and employment.

Understanding Traumatic Brain Injuries:

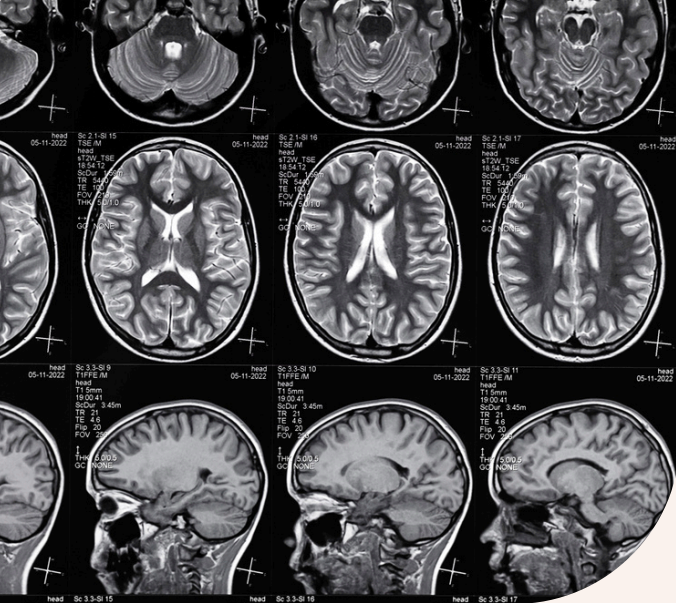
Signs, Symptoms & Resources



**August 27, 2024
9am-12:15pm
3.0 CEUs**

Sign-in required between
8:30am and 9:00am.

**Area Agency on Aging, PSA 2
Continuing Education Workshop**



Presenters:

Cynthia Beaulieu, PhD, ABPP-CN, is a board-certified clinical neuropsychologist and associate professor in the Department of Physical Medicine and Rehabilitation at The Ohio State University Wexner Medical Center who has 30 years of experience in TBI clinical and research capacities.

John D. Corrigan, PhD, is a Professor in the Department of Physical Medicine and Rehabilitation at Ohio State University and Director of the Ohio Valley Center for Brain Injury Prevention and Rehabilitation who has treated and studied long-term outcomes of persons with traumatic brain injury for the past 40 years.

Joy Omslaer, LISW-S, is a licensed independent social worker (supervisor) who teaches and supervises diverse clients at many levels of ability and disability, economic security and insecurity and who may have experienced life-changing levels of trauma.

Continuing Education:

- 3.0 clock hours for social workers, **#RSX089101**.
- The Ohio Board of Nursing accepts events approved for counselors and social workers for continuing nursing education.

All registrants who require CEUs are required to sign in. Late arrival or leaving early results in time modification of CEU certificate.

Objectives:

Participants will be able to:

- List **causes of acquired brain injury** (traumatic and non-traumatic).
- Provide two to four examples of **challenges** an individual with a brain injury may experience.
- Be able to define **disorders of consciousness**.
- List three to four **accommodations and adjustments** when working with an individual identified as having a brain injury.

This workshop takes place on Zoom. The presenter requests participants keep their cameras on during the presentation to ensure optimum engagement. A link and any handouts will be emailed the day before the workshop. Attendance is required for CEU credit.

Questions:

Questions can be directed to **Kelsey Snowden** at ksnowden@info4seniors.org or **937-341-3020**.

Cancellation:

Cancellation for refund must be received no later than **August 23**.

Future Workshops:

Visit our website for information on future training opportunities. You may also register to receive email notifications when new brochures are posted.

www.info4seniors.org

Purpose:

Traumatic brain injury (TBI) affects millions of Americans every year, with the highest rates of hospitalization and death among older adults. When working with older adults, it is important to understand what a TBI is, what are the signs, symptoms and treatments, and what the effect of a TBI is on the aging process.

Join the brain injury professionals from the **Ohio State University, Ohio Brain Injury Program** to learn what a brain injury is, what are the impacts on one's life, what TBI screening looks like, what are the available treatments, services, accommodations and resources, and how to appropriately work with those living with a TBI.



THE OHIO STATE UNIVERSITY

WEXNER MEDICAL CENTER